

Santo Domingo de Heredia

Property ID:

Price:

Address:

Bedrooms:

Bathrooms:

Area: 1514 sq.m.

Type: jpeg

Lot of 1,514 m² in Santo Domingo de Heredia with potential for residential and commercial development

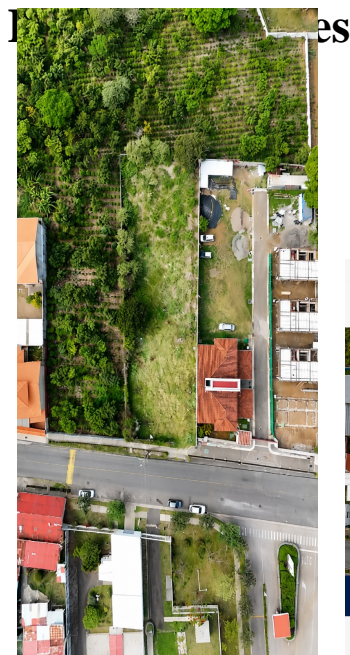
Unique investment opportunity in Santa Rosa de Santo Domingo, Heredia.

This 1,514 m² lot is located in an area of urban growth with excellent connectivity and frontage on National Route 103. The land use certificate classifies the requested activity within the Residential-Commercial category, encompassing projects such as condominiums, apartments, single-family homes, and some commercial uses compatible with current regulations.

With a building coverage of up to 75% and located just 25 meters east of the Avenir Condominium, this property represents an excellent alternative for developers and investors seeking to generate added value in one of the most sought-after areas of the Greater Metropolitan Area.

Area: 1,514 m²

Total Price: \$250,000,000



LOTE EN VENTA
Santa Rosa, Santo Domingo
CALLE PÚBLICA

ÁREA TOTAL: 1,514 m²
USO DE SUELO: RESIDENCIAL
TOPOGRAFÍA: TERRENO IRREGULAR PLANO

INFORMACIÓN DEL LOTE
UBICACIÓN: Santa Rosa, Santo Domingo de Heredia, Calle Pública
FRONTE A CALLE PÚBLICA: 22.31 m
LADO IZQUIERDO: 18.27 m
LADO DERECHO: 18.27 m
LADO TRASERO: 18.27 m

INFORMACIÓN INTELIGENTE
Ubicación estratégica en zona de alta demanda y crecimiento.

CONSTRUYE TU FUTURO
En una ubicación con potencial. Conoce más detalles y oportunidades. ¡Hazte más por adelantado!

ESTADO DEL TERRENO: Residencial
ÁREA TOTAL: 1,514 m²
UBICACIÓN: Calle Pública
TOPOGRAFÍA: Irregular plano

